



# DelStar

Series 200

**FROM THE IDEAL "OUTPUT" CURVE  
WE BUILT THE ALTERNATOR TO FIT IT**

## INTRODUCING

The all new DelStar Series 200 combines the best and most advanced brushless technology ever designed.

With more than 245 AMPS of power @ 2000 alternator RPM, it is ideal for the most demanding high output at engine idle applications.

This 12V-350 AMP air cooled alternator has been engineered for reliability.

It is a rugged lightweight and compact construction of only 51 lbs. that delivers outstanding performance unmatched by other "heavy weights".

*designed for*

**Fire Trucks and  
Rescue Vehicles**



Dixie Electric Ltd.  
517 Basaltic Road  
Concord, ON.  
Canada L4K 4W8

Tel.: (905) 879-0533  
Fax: (905) 879-0532  
E-Mail: [sales@dixie-electric.com](mailto:sales@dixie-electric.com)  
Web Site: [www.dixie-electric.com](http://www.dixie-electric.com)

Dixie Electric Inc.  
17100 Medina Road, Suite 100  
Minneapolis, MN.  
U.S.A. 55447-1249

Tel.: (763) 475-6629  
Fax: (763) 475-6635  
E-Mail: [mn.sales@dixie-electric.com](mailto:mn.sales@dixie-electric.com)  
Web Site: [www.dixie-electric.com](http://www.dixie-electric.com)



## Series 200

The DelStar SERIES 200 is an integral charging system of an innovative brushless design. The compact, heavy duty construction, provides increased service life expected to match the longer maintenance intervals of today's engines, while providing a performance level without parallel.



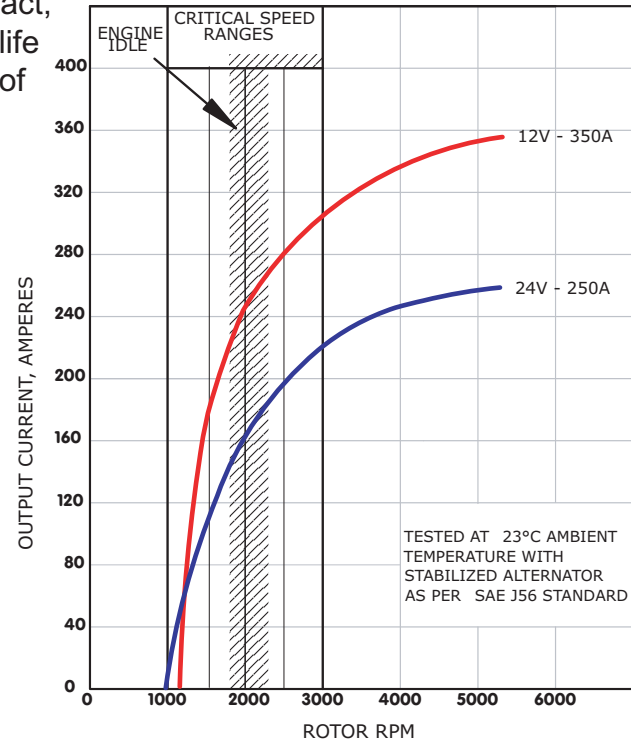
### FEATURES

- Air cooled design
- High output at all critical speed ranges
- Solid state regulator with load dump protection
- Negative ground
- Self-excited one wire connection
- R terminal connection for tachometer
- Optional D+ terminal for indicator light
- Optional S terminal for external sensing
- Temperature limits:  
Low -34°C / -30°F  
High 93°C / 200°F
- Two - 30mm ball bearings on Drive End bracket and extra long opposite End roller bearing, for very-heavy belt loads
- Speed limits:  
8,000 RPM continuous  
10,000 RPM intermittent
- SAE J180 dual foot mount
- Weight: 51 LBS / 23 KG

### RECOMMENDED FOR

- Fire Trucks • Rescue Vehicles • Agricultural
- Industrial • Marine • Mining

### PERFORMANCE CURVE



### CRITICAL SPEED RANGES

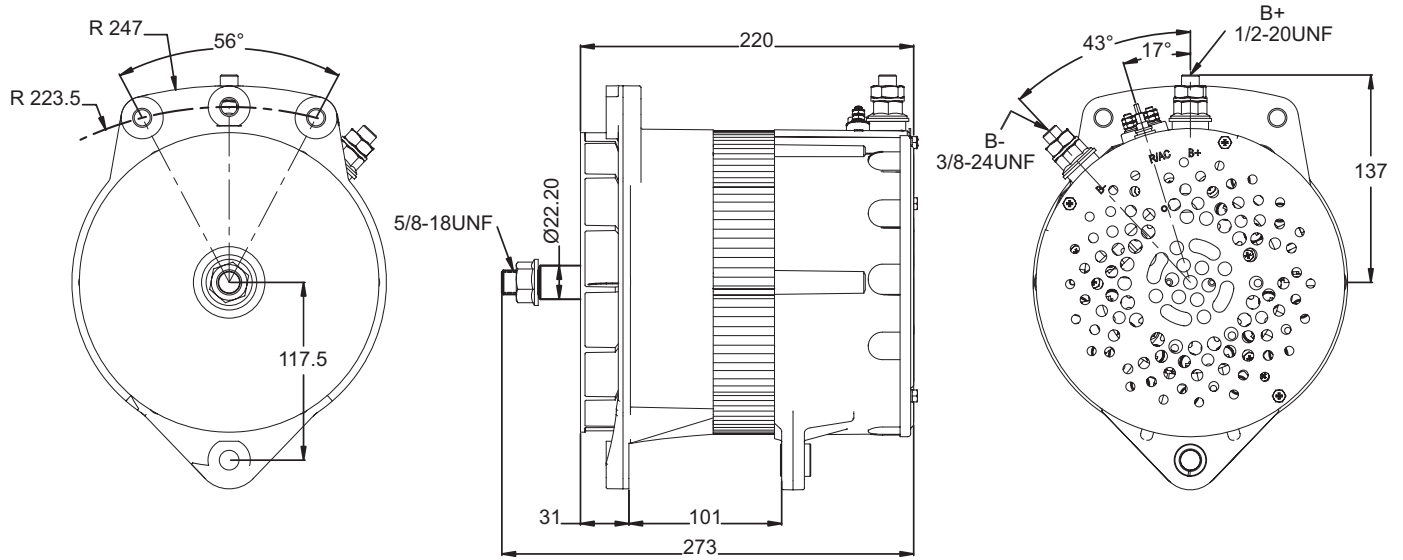
12V - 350A @ RPM	AMPS
1800	219
2000	245
2500	275
3000	306
5000	353

24V - 250A @ RPM	AMPS
1800	141
2000	160
2500	198
3000	225
5000	258



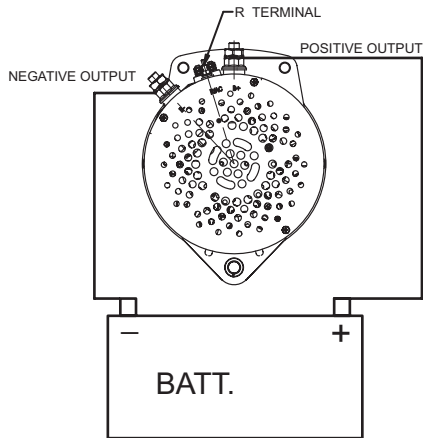
Series 200

OUTLINE

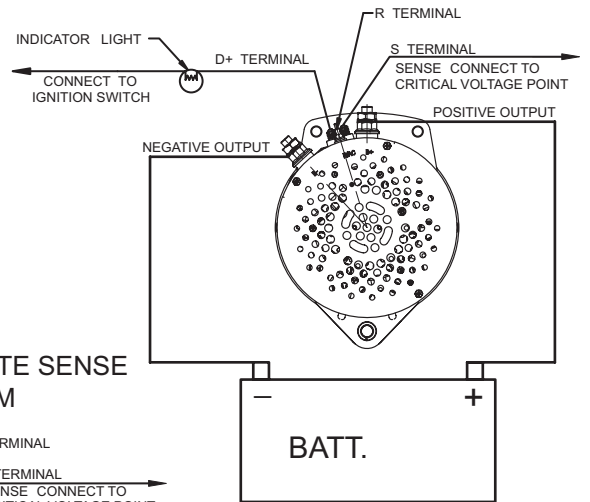


WIRING DIAGRAMS

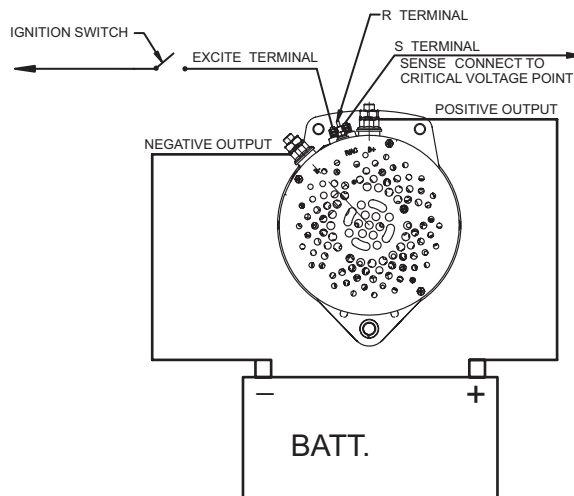
SELF EXCITE WIRING DIAGRAM



REMOTE VOLTAGE SENSE AND INDICATOR LIGHT WIRING DIAGRAM



IGNITION EXCITE / REMOTE SENSE WIRING DIAGRAM



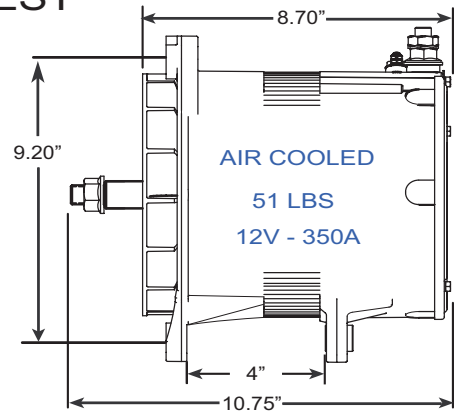


## Series 200

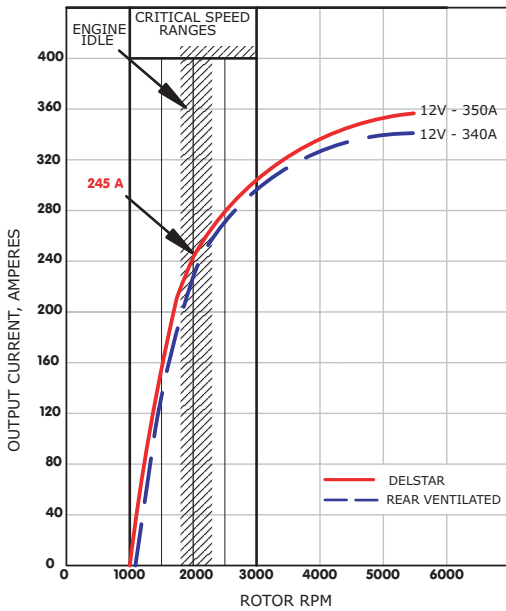
### COMPARED TO THE REST



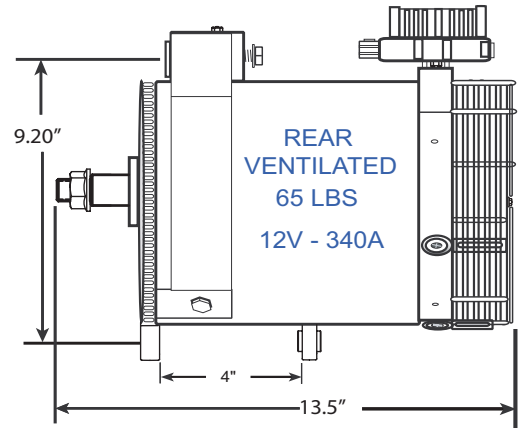
- BRUSHLESS
- LIGHT WEIGHT
- SMALLER SIZE
- UP TO 20% MORE AMPS AT ALL CRITICAL SPEED RANGES
- A PERFECT DROP-IN FOR ALL J180 MOUNT APPLICATIONS
- UP TO 65% LESS TIME REQUIRED TO SERVICE



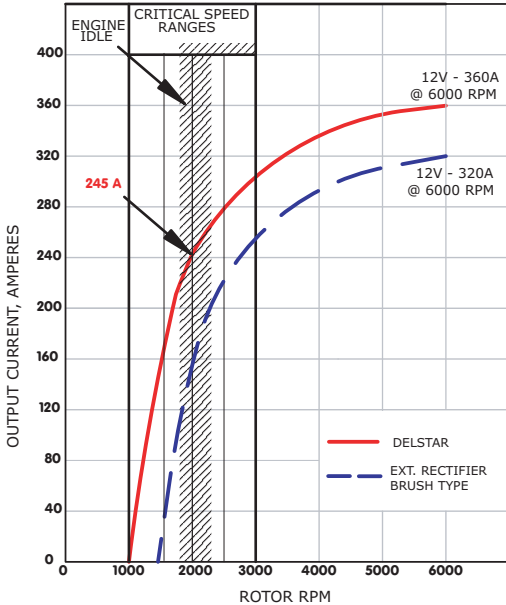
### PERFORMANCE CURVE



- 22% HEAVIER
- 20% BIGGER
- UP TO 20A @ CRITICAL AT LOWER SPEED RANGES
- LABOUR INTENSIVE TO SERVICE



### PERFORMANCE CURVE



- 40% LESS WEIGHT
- 8.5% SMALLER
- 90 LESS AMPS @ 2000 RPM
- BRUSH TYPE DESIGN
- LABOUR INTENSIVE TO SERVICE

