



TECH TIPS

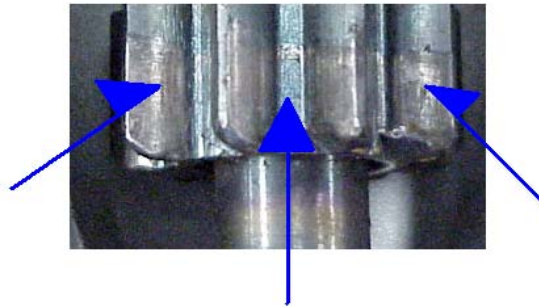
Dixie Part Number: S-8654 S-8818 S-80164

Applications: Various Hyster and Yale applications with Mazda Engines

Condition: The operator of the vehicle may complain of one or more of the following conditions:

- the starter hangs up after the engine starts
- the starter clicks without engaging into the ring gear (flywheel)

The technician may observe that when removing the starter the pinion shows wear on both sides of the pinion as well as between both teeth as shown in the picture below.



Cause: The above conditions may be caused by improperly adjusted pinion clearance.

Correction: The above starter has slotted mounting holes and the pinion clearance must be properly adjusted when installing the starter! To adjust the pinion clearance mount the starter in the bell housing **but** only tighten the mounting bolts finger tight. Ensure that the starter is tight against the flange and that the pilot ring is completely engaged in the bell housing bore. Crank the engine over, then torque the starter mounting bolts.

